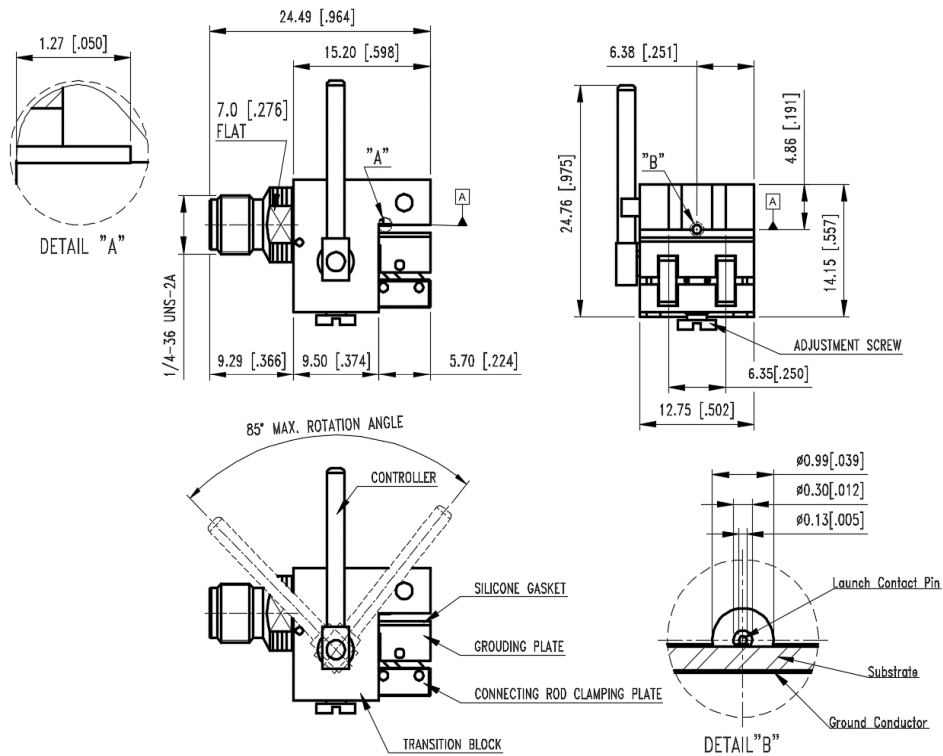




▪ **Outline Dimension Drawing**

Dimensions: mm[inch]



▪ **Material Specification**

Description	Material	Plating
Body	Stainless steel	Passivate
Contact	BeCu	Gold
Dielectric*2	High performance application material	
Transition block	Brass	Nickel
Connecting rod clamping plate	Brass	Nickel
Grounding plate	Brass	Nickel
Controller	Stainless steel	Passivate
Adjustment screw	Stainless steel	Passivate
Launch pin	Brass	Gold
Silicone gasket	S.I.R.	

In the effort to improve our products, we reserve the right to make changes judged to be necessary



▪ **Electrical Specification**

Description			Description		
Impedance	50	Ω			
Frequency	40	GHz	Insulation Resistance	5000	MΩ Min.
Voltage Rating	170	Vrms Max.	Inner Contact Resistance	3	mΩ Max.
Dielectric Withstanding Voltage	335	Vrms Max.	Outer Contact Resistance	2	mΩ Max.

▪ **Mechanical Specification**

Description			Description		
Center Contact			Recommended Torque	7~9	in. lbs
Axial Force-Mating End	6	lbs.	Coupling Test Torque	15.0	in. lbs
Axial Force-Opposite End	6	lbs.	Applicable board thickness	0.1~2.3	mm
Connector Durability	500	cycles			
Weight	N/A	g			

▪ **Environmental Specification**

Description		
Temperature Min.	-45	°C
Temperature Max.	105	°C
Hermetic Seal	N/A	

In the effort to improve our products, we reserve the right to make changes judged to be necessary