

Dual Band Omni Directional Antenna

for 2400 - 2500/5150 - 5875/5900-7125 MHz

Version 1

SAA19-220070

Electrical Specification

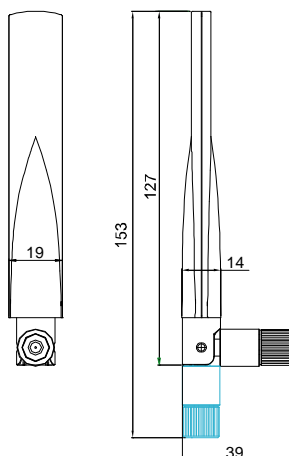
Frequency range	2400 – 2500 MHz	5150 – 7125 MHz
Peak Gain	3 dBi	6 dBi
VSWR	2.0:1 (Max.)	
Polarization	Linear , vertical	
Horizontal BW 3dB	360°	
Vertical BW 3dB	50°	25°
Sidelobes level	N/A	
Front-to-back ratio	N/A	
Isolation	N/A	
Input impedance	50 Ohm	
Cable	N/A	
Connector	RP SMA plug	
Power handling	2 W	
Lightning protection	N/A	



Nickel-plated

Environmental & Mechanical Characteristics

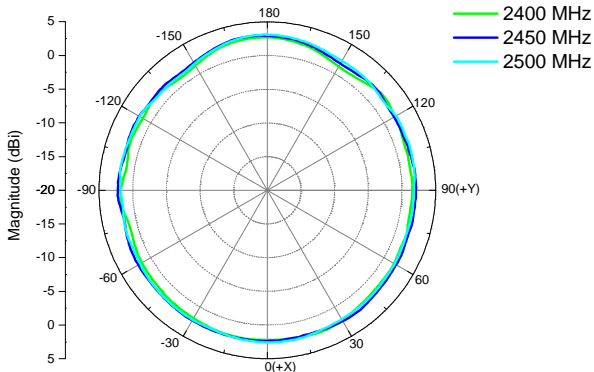
Temperature	-10°C to +55°C
Humidity	95% @55°C
Radome color	White
Radome material	ABS, UV resistant
Weight	21 g
Dimensions	19 x 39 x 153 mm



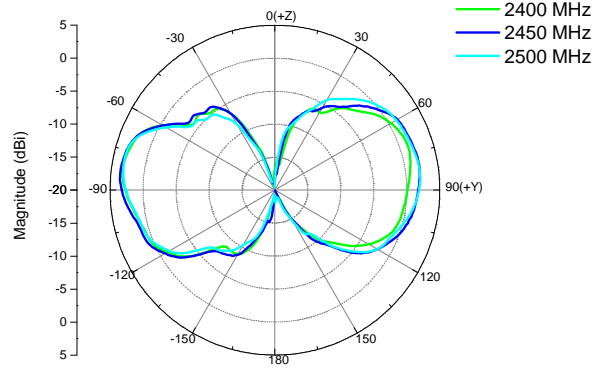
Radiation Pattern

2.4 – 2.5 GHz

H-plane Co-polarization Pattern

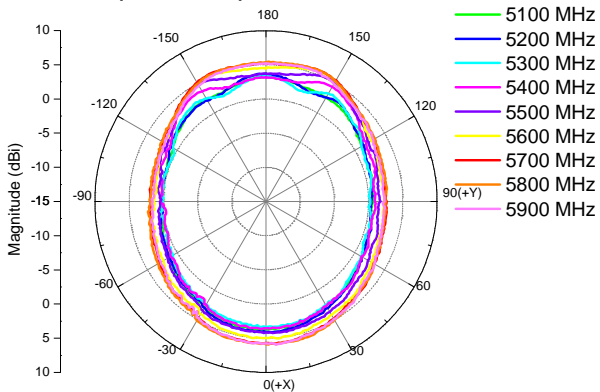


V -plane Co-polarization Pattern

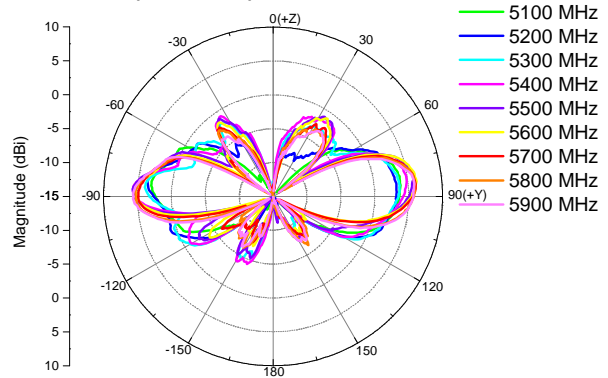


5.1 – 5.9 GHz

H-plane Co-polarization Pattern

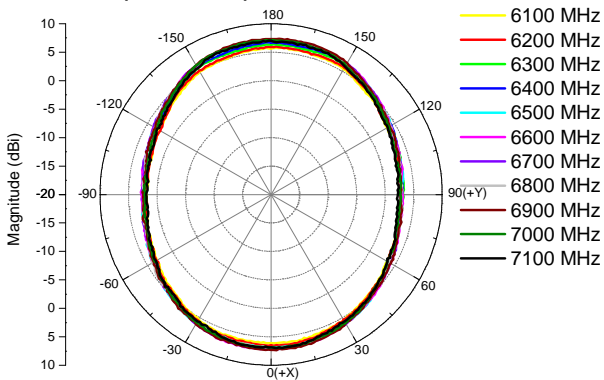


V -plane Co-polarization Pattern

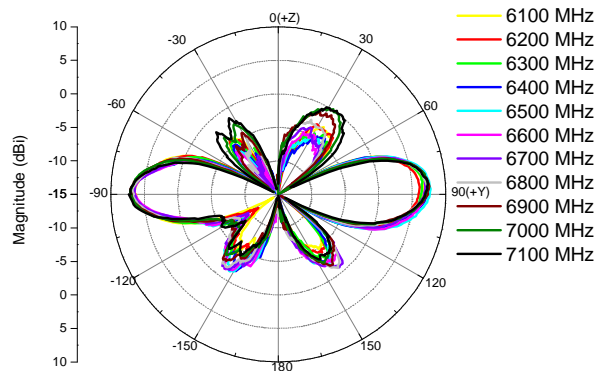


6.1 – 7.1 GHz

H-plane Co-polarization Pattern



V -plane Co-polarization Pattern



Product Drawing

